

Lesson 1

4

To-o-o-o To-o To Lines Spaces B A G

E G B D F F A C E $\begin{matrix} \circ\circ & \circ\circ & \circ\circ \\ \circ & \circ & \circ \\ \circ & \circ & \circ \end{matrix}$

Rhythm Exercises (play on B, A & G)

[A]

[B]

[C]

[D]

Lesson 2

One For The Money

1

B

A musical staff in 4/4 time with a treble clef. The notes are: B4 (quarter), rest (quarter), D4 (quarter), rest (quarter), E4 (quarter), rest (quarter), F4 (quarter), rest (quarter). The staff ends with a double bar line.

Two For The Show

2

A

A musical staff in 4/4 time with a treble clef. The notes are: A3 (quarter), rest (quarter), B3 (quarter), rest (quarter), C4 (quarter), rest (quarter), D4 (quarter), rest (quarter). The staff ends with a double bar line.

Three To Get Ready

3

A musical staff in 4/4 time with a treble clef. The notes are: E3 (quarter), rest (quarter), F3 (quarter), rest (quarter), G3 (quarter), rest (quarter), A3 (quarter), rest (quarter). The staff ends with a double bar line.

Now Go Cat Go

4

A musical staff in 4/4 time with a treble clef. The notes are: B3 (quarter), A3 (quarter), rest (quarter), G3 (quarter), F3 (quarter), rest (quarter), E3 (quarter), rest (quarter). The staff ends with a double bar line.

You Can Do Anything

5

G

A musical staff in 4/4 time with a treble clef. The notes are: G3 (quarter), rest (quarter), A3 (quarter), rest (quarter), B3 (quarter), rest (quarter), C4 (quarter), rest (quarter). The staff ends with a double bar line.

So Let's Play

6

A musical staff in 4/4 time with a treble clef. The notes are: D4 (quarter), rest (quarter), E4 (quarter), rest (quarter), F4 (quarter), rest (quarter), G4 (quarter), rest (quarter). The staff ends with a double bar line.

The Suede Shoe Blues

Write your own solo using the notes you know so far!

7

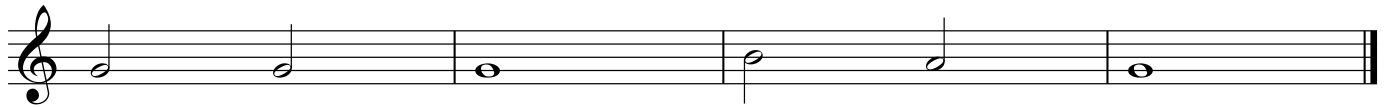
A musical staff in 4/4 time with a treble clef. The notes are: G3 (quarter), A3 (quarter), B3 (quarter), C4 (quarter), rest (quarter), rest (quarter), rest (quarter), rest (quarter). The staff ends with a double bar line.

Lesson 3

6

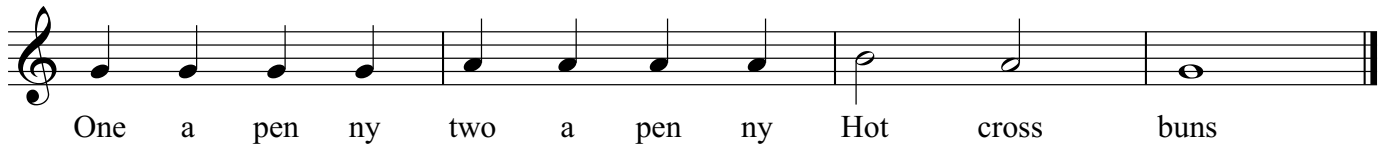
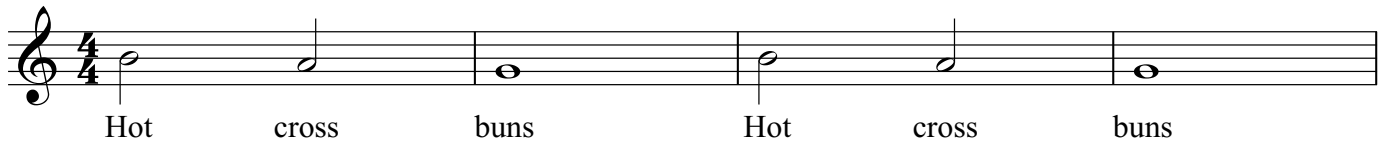
8

Looooong Tones



9

Hot Cross Buns



The "Gotcha" Cha Cha

10



Four "Finger Twisters"

11



12



13



14



French Song

15

Trad.

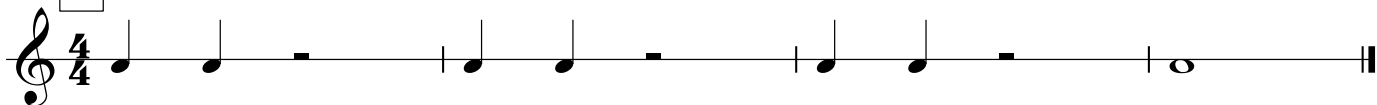


Lesson 5

A

Rhythm Exercises
Play on B, A & G

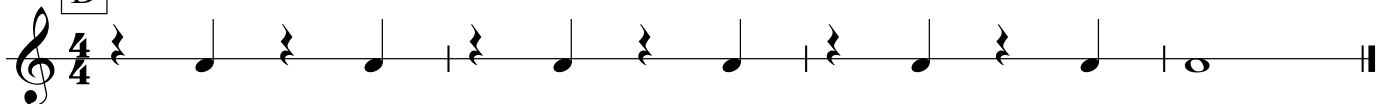
B



C



D

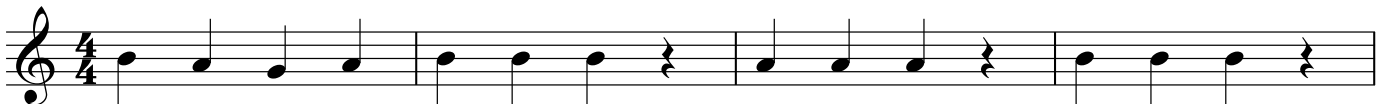


16

Don't Play This Line!!!!



17

Merrily We Roll Along

Lesson 6

18

3/8 Scale

Do Re Me Re Do

19

Gnos Hcnerf ?

.draT

20

APACHE WARRIOR

*

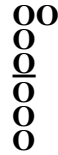
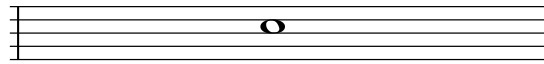
* Drum accompaniment rhythm-
(may also be used
on Tribal War Chant)



Lesson 7

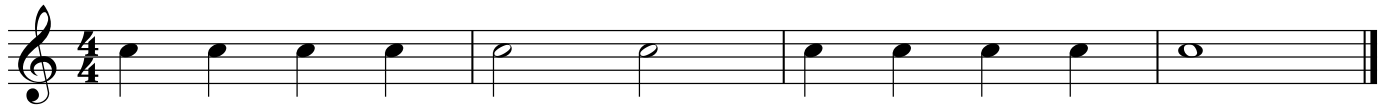
New Note

C



21

Oh Say Can You "C"



22

To "C" or Not To "C"



23

"C" "C" Senor



24

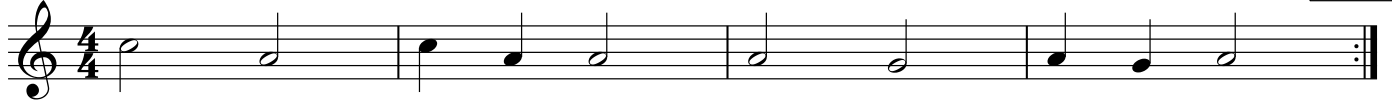
1/2 Scale



25

Tribal War Chant

Repeat
(new)



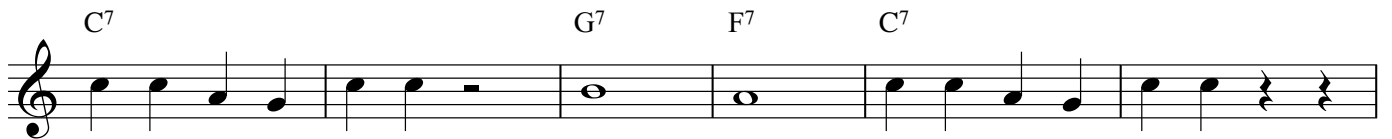
26

March



27

"Rock Out"



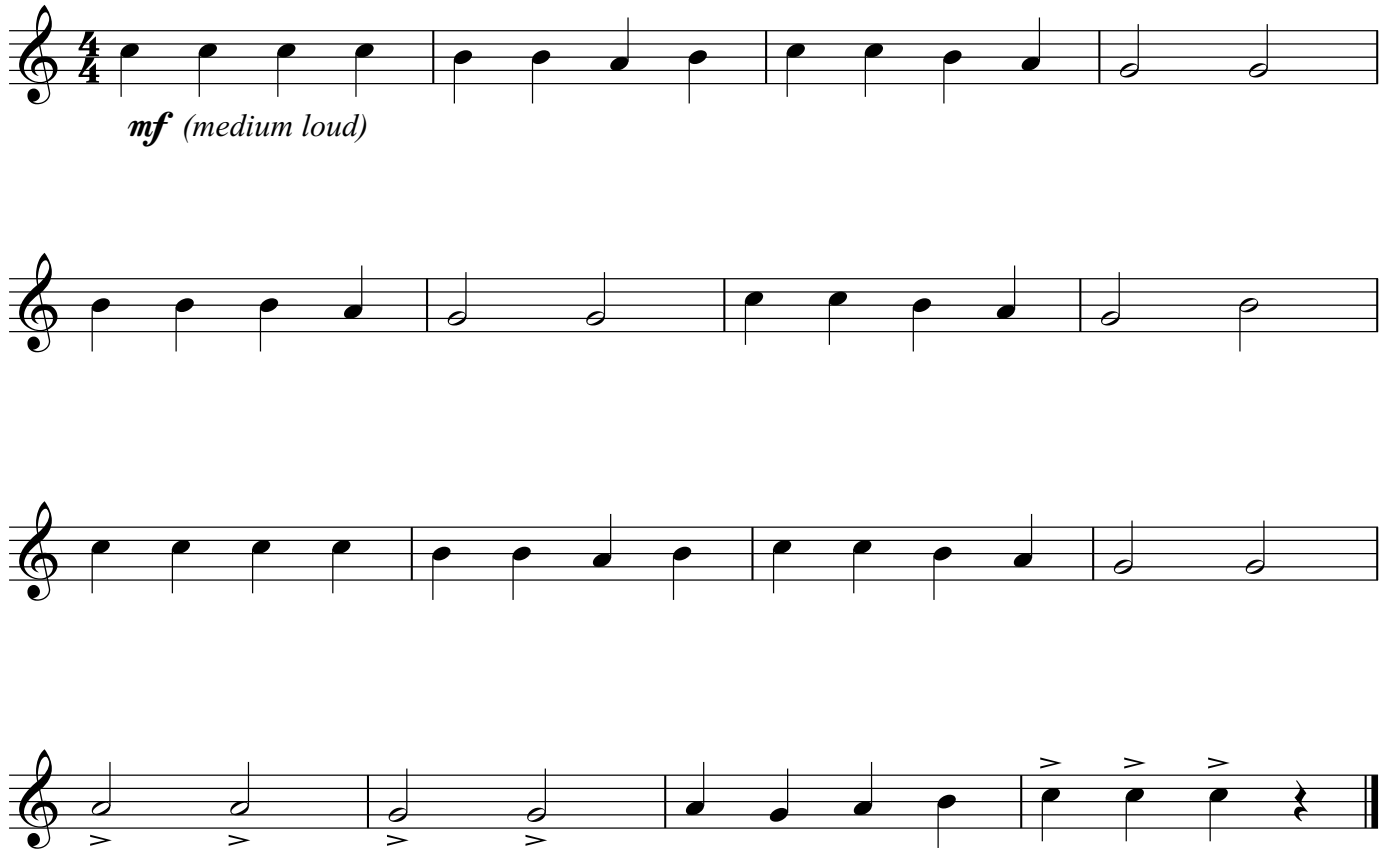
Piano and Guitar accompaniments to all of the songs in this book may be found in the Teacher's Manual & Piano (Guitar) Accompaniment Book.



Lesson 9

28


The "Peter Piper Picked A Peck Of Pickled Peppers" Polka



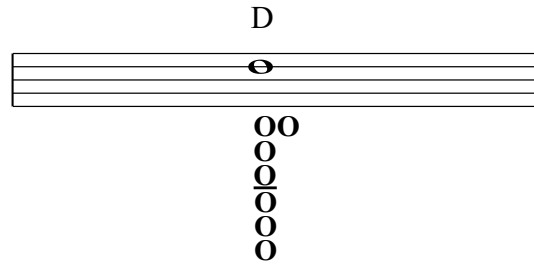
Musical notation for the polka, consisting of four staves of music in 4/4 time. The first staff begins with the dynamic marking *mf* (medium loud). The melody consists of eighth and quarter notes, with a final measure containing a half note. The second and third staves continue the melody with similar rhythmic patterns. The fourth staff concludes the piece with a final cadence, featuring three eighth notes with accents and a quarter rest.

Lullaby

29

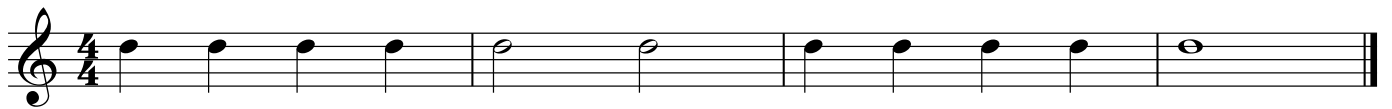


Musical notation for the lullaby, consisting of two staves of music in 4/4 time. The first staff begins with the dynamic marking *p* (soft). The melody is composed of quarter and half notes, ending with a half note. The second staff continues the melody with quarter notes and ends with a half note.



30

Mickey "D"



31

Washington ? . ? .



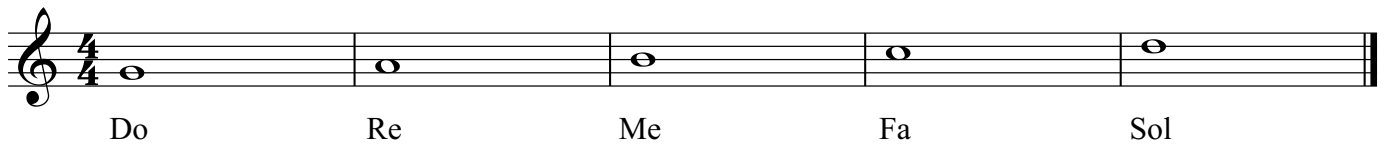
32

Rain, Rain Go Away!



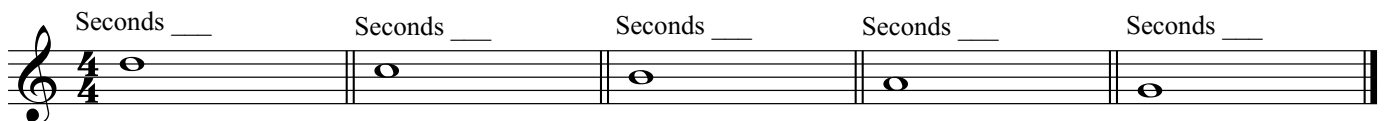
33

5/8 Scale



Long Tone Contest

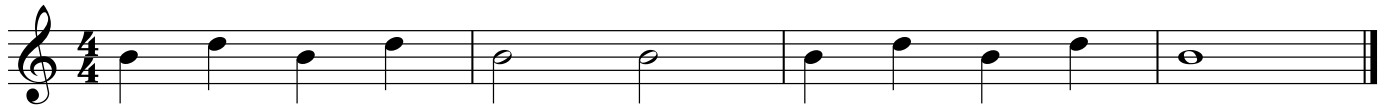
How many seconds can you hold each note?



Lesson 11

34

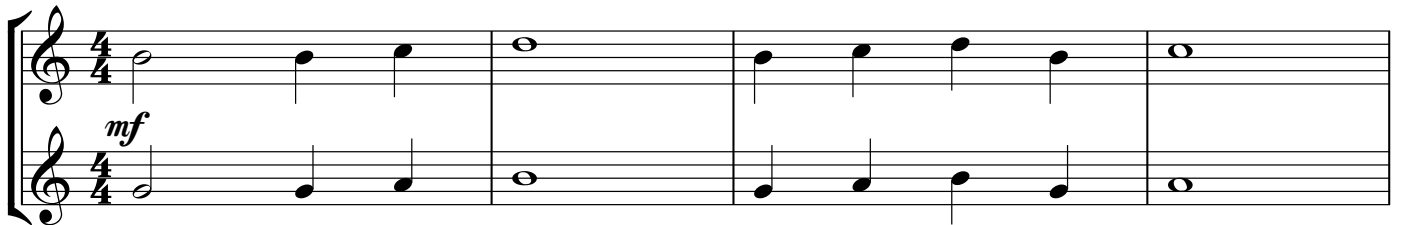
Finger Twister II



Lightly Latin

35

NEW: *Harmony*- The sounding of two or more pitches at the same time.



New: 1st & 2nd endings
Play 1st ending the 1st time, & the 2nd ending on the repeat.



36

Jingle Bells

Jin - gle bells Jin - gle bells Jin - gle all the way.

f (loud)

The first line of music is written on a single treble clef staff in 4/4 time. It consists of four measures. The notes are: G4 (quarter), A4 (quarter), B4 (half), G4 (quarter), A4 (quarter), B4 (quarter), G4 (quarter), F#4 (quarter), E4 (half), D4 (half).

Oh what fun it is to ride a one horse o - pen slei - gh

The second line of music is written on a single treble clef staff in 4/4 time. It consists of four measures. The notes are: G4 (quarter), A4 (quarter), B4 (quarter), G4 (quarter), A4 (quarter), B4 (quarter), G4 (quarter), F#4 (quarter), E4 (half), D4 (half).

Jin - gle bells Jin - gle bells Jin - gle all the way.

The third line of music is written on a single treble clef staff in 4/4 time. It consists of four measures. The notes are: G4 (quarter), A4 (quarter), B4 (half), G4 (quarter), A4 (quarter), B4 (quarter), G4 (quarter), F#4 (quarter), E4 (half), D4 (half).

Oh what fun it is to ride a one horse o - pen sleigh.

The fourth line of music is written on a single treble clef staff in 4/4 time. It consists of four measures. The notes are: G4 (quarter), A4 (quarter), B4 (quarter), G4 (quarter), A4 (quarter), B4 (quarter), G4 (quarter), F#4 (quarter), E4 (half), D4 (half).

37

Joyful Joyful

Beethoven

f

The first line of music is written on a single treble clef staff in 4/4 time. It consists of four measures. The notes are: G4 (quarter), A4 (quarter), B4 (quarter), G4 (quarter), A4 (quarter), B4 (quarter), G4 (quarter), F#4 (quarter), E4 (half), D4 (half).

The second line of music is written on a single treble clef staff in 4/4 time. It consists of four measures. The notes are: G4 (quarter), A4 (quarter), B4 (quarter), G4 (quarter), A4 (quarter), B4 (quarter), G4 (quarter), F#4 (quarter), E4 (half), D4 (half).